

Dereham Family Support Group

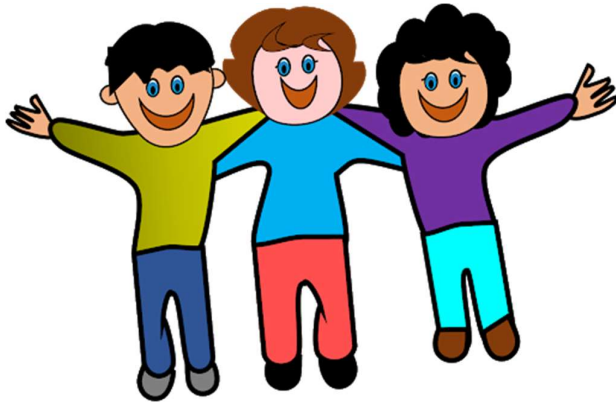


Social Story: My Group





The Dereham Family Support Group run by ASD Helping Hands is at the Scout Hut in Toftwood, Near Dereham



It is a place where I can meet my friends and make new ones.

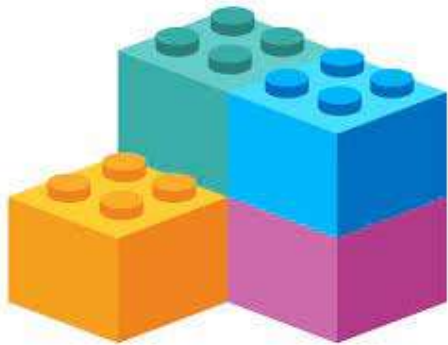
Mum and Dad or the person that looks after me can come too and meet other Parents and Carers.



It might make be scared or nervous meeting new people, but there are lots of things for me to do there!



**At the Group there will be
volunteers who can help me.
They will be wearing Blue
Tops.**



**At the group I can play with
the toys like logo and farm
animals.**

**I can make things with the
Arts and Crafts.**

I can play outside.



**We always have a cooking
activity!**



At the group I need to follow some rules to make sure everyone has a great time.

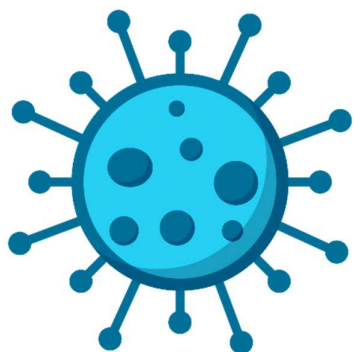


**I must not Hit or Kick anyone
I must not swear or use rude words.**

I will treat people how I like to be treated.



If I need help or are upset. I can tell someone, and they will help me.



At the moment I also need to follow 1 more rule because of Covid-19.



I must wash my hands more often and after I have finished an activity.



We are looking forward to seeing you at the group!!

We are going to have a great time!!